

# MI SUMMER FLOORING



SPC Collection

# CONTENT

**PART.1** Company Profile

**PART.2** SPC Floor Collections

**PART.3** Contact Us

## PART.1

### Company Profile-About Us



**Mi Summer**

FLOOR FOR YOU

- Mi Summer Floor started in 2016 with export business from Shanghai, China. As a professional flooring company, we are supplying both residential and commercial floor solutions to overseas wholesalers, contractors & project designers.
- Mi Summer owns 3 factories manufacturing: SPC, LVT, WPC decking, laminate flooring, resilient vinyl roller, and related accessories.
- **Design Nice Floor**
- **Make Quality Floor**
- **Create Your Floor**

# PART.1

## Company Profile-Our Factory



Flexible Productivity



Advanced Equipments



Progressive R & D System

# PART.1

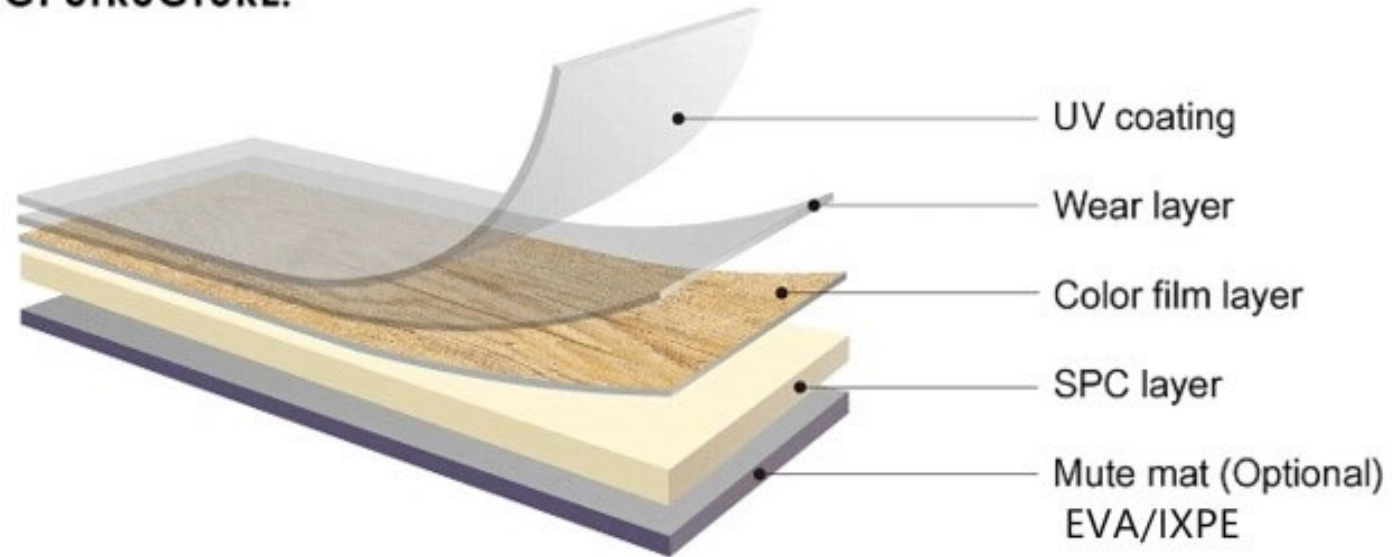
## Company Profile-Our Lab



## PART.2

### SPC Floor-Structure

#### PRODUCT STRUCTURE:



Due to special structure & material type, rigid luxury vinyl floor (also known as SPC floor) has characters of 100% waterproof, more durability and easy installation & maintenance comparing other normal vinyl floors.

PART.2 SPC Floor Collections  
- Wood Pattern



## PART.2 Colors-Wood Pattern



Sku: MSW-22002

Specification: 1220\*220\*5.5mm (4.5mm SPC+1mm IXPE)  
Wear Layer: 0.5mm

Package: 8 Pcs/Carton, 2.1472 M2/Carton



## PART.2 Colors-Wood Pattern



**Sku: MSW-22003**

**Specification: 1220\*220\*5.5mm (4.5mm SPC+1mm IXPE)  
Wear Layer: 0.5mm**

**Package: 8 Pcs/Carton, 2.1472 M2/Carton**

## PART.2 Colors-Wood Pattern



**Sku: MSW-22010**

**Specification: 1220\*220\*5.5mm (4.5mm SPC+1mm IXPE)  
Wear Layer: 0.5mm**

**Package: 8 Pcs/Carton, 2.1472 M2/Carton**

## PART.2 Colors-Wood Pattern



Sku: MSW-22012

Specification: 1220\*220\*5.5mm (4.5mm SPC+1mm IXPE)  
Wear Layer: 0.5mm

Package: 8 Pcs/Carton, 2.1472 M2/Carton

## PART.2 Colors-Wood Pattern



Sku: MSW-31013

Specification: 1220\*220\*5.5mm (4.5mm SPC+1mm IXPE)  
Wear Layer: 0.5mm

Package: 8 Pcs/Carton, 2.1472 M2/Carton

## PART.2 Colors-Wood Pattern



**Sku: MSW-31167**

**Specification: 1220\*220\*5.5mm (4.5mm SPC+1mm IXPE)  
Wear Layer: 0.5mm**

**Package: 8 Pcs/Carton, 2.1472 M2/Carton**

## PART.2 Colors-Wood Pattern



Sku: MSW-31175

Specification: 1220\*220\*5.5mm (4.5mm SPC+1mm IXPE)  
Wear Layer: 0.5mm

Package: 8 Pcs/Carton, 2.1472 M2/Carton

PART.2 SPC Floor Collections  
-Herringbone Wood Pattern



## PART.2 Colors-Herringbone Wood Pattern



**Sku: MSH-6108**

**Specification: 610\*127\*5.5mm (4.5mm SPC+1mm IXPE)  
Wear Layer: 0.5mm**

**Package: 20 Pcs/Carton, 1.5494 M2/Carton**



## PART.2 Colors-Herringbone Wood Pattern



**Sku: MSH-6126**

**Specification: 610\*127\*5.5mm (4.5mm SPC+1mm IXPE)  
Wear Layer: 0.5mm**

**Package: 20 Pcs/Carton, 1.5494 M2/Carton**

## PART.2 Colors-Herringbone Wood Pattern



Sku: MSH-6206

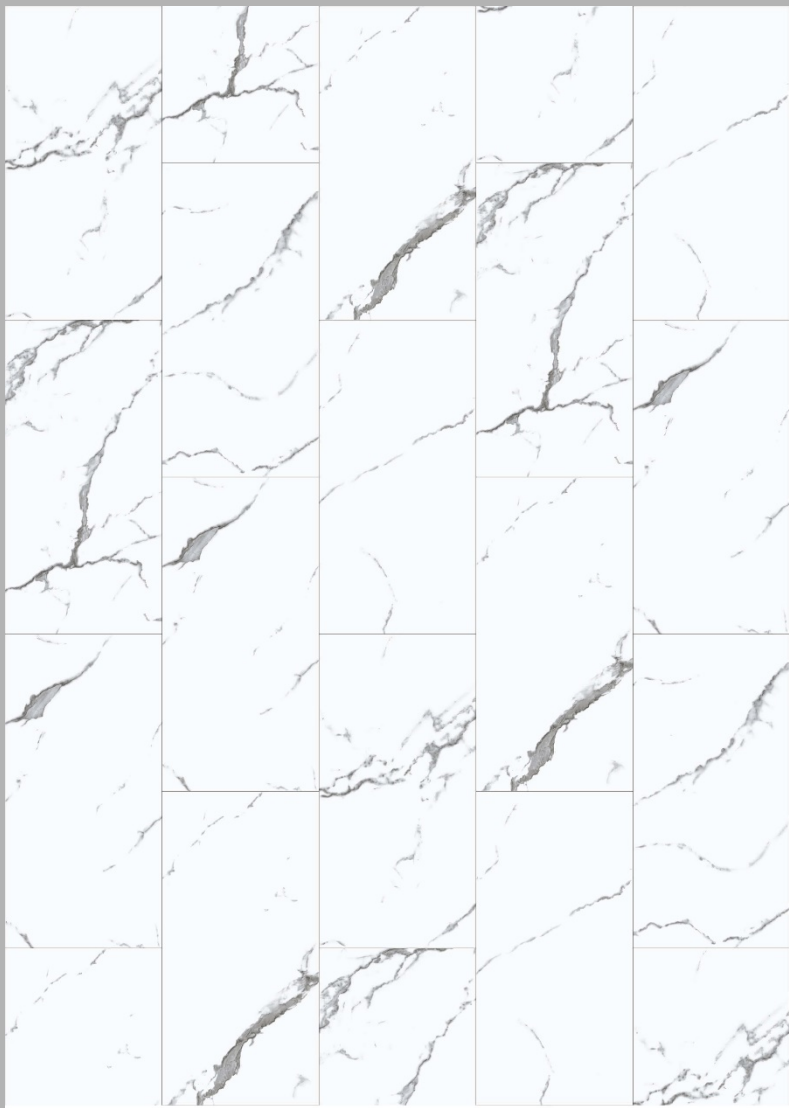
Specification: 610\*127\*5.5mm (4.5mm SPC+1mm IXPE)  
Wear Layer: 0.5mm

Package: 20 Pcs/Carton, 1.5494 M2/Carton

PART.2 SPC Floor Collections  
- Stone Pattern



## PART.2 Colors-Stone Pattern

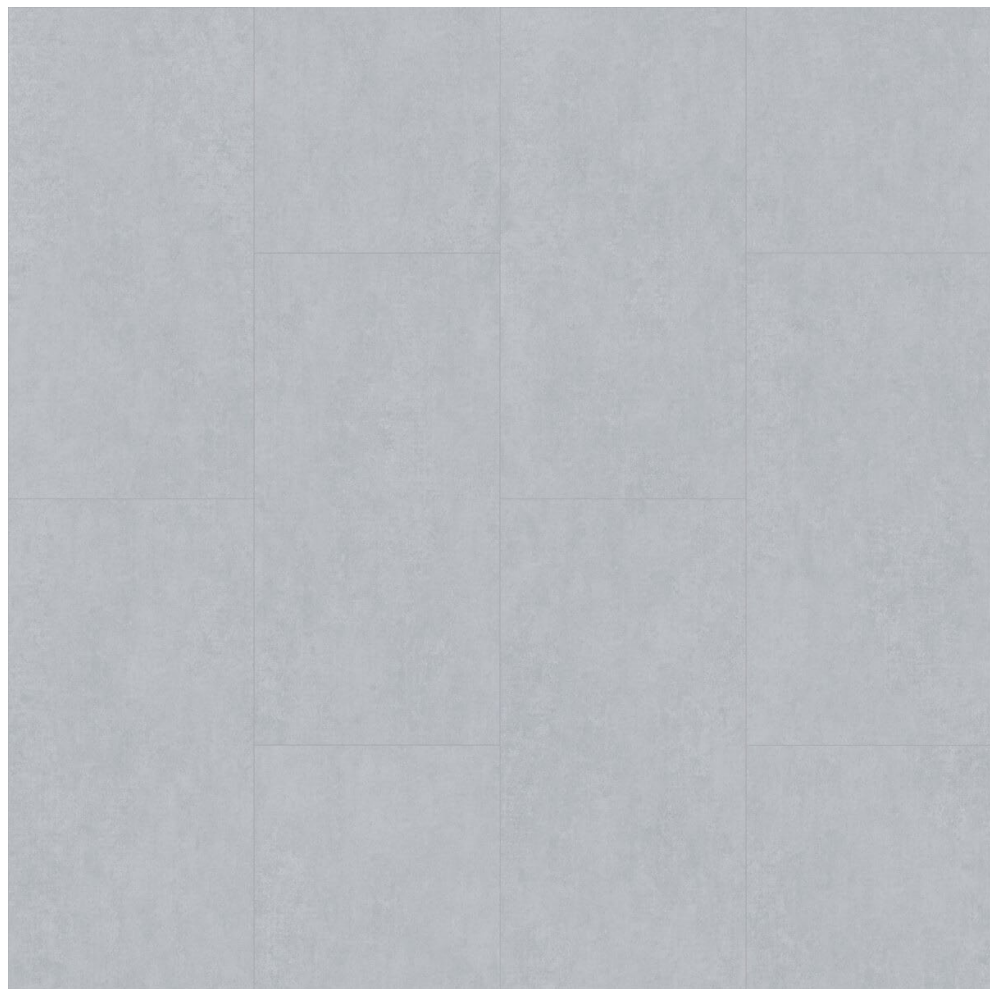


**SKU: MSS-22301**

**Specification: 610\*305\*5.5mm (4.5mm SPC+1mm IXPE)  
Wear Layer: 0.5mm**

**Package: 8 Pcs/Carton, 1.4884 M2/Carton**

## PART.2 Colors-Stone Pattern

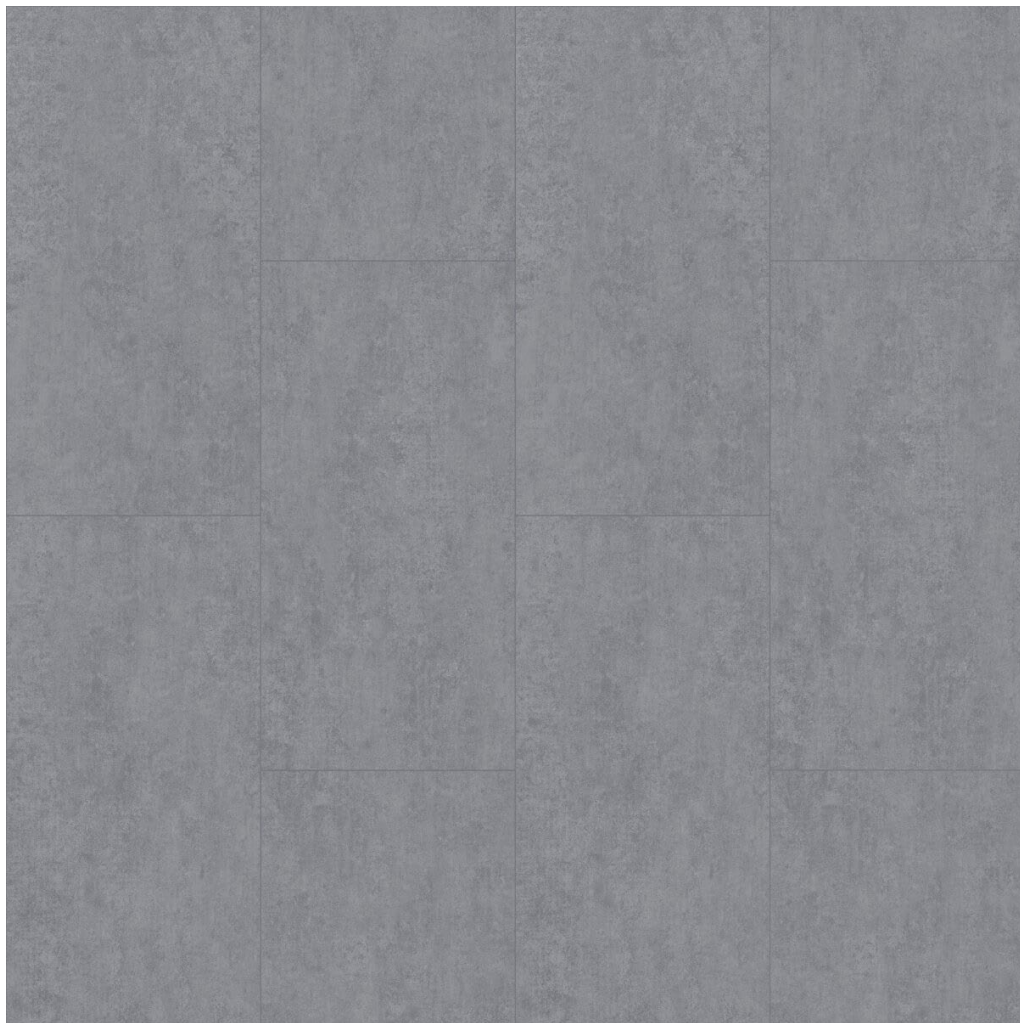


SKU: MSS-22916

Specification: 610\*305\*5.5mm (4.5mm SPC+1mm IXPE)  
Wear Layer: 0.5mm

Package: 8 Pcs/Carton, 1.4884 M2/Carton

## PART.2 Colors-Stone Pattern



**SKU: MSS-22920**

**Specification: 610\*305\*5.5mm (4.5mm SPC+1mm IXPE)  
Wear Layer: 0.5mm**

**Package: 8 Pcs/Carton, 1.4884 M2/Carton**

## PART.2 Colors-Stone Pattern



**Sku: MSS-22921**

**Specification: 610\*305\*5.5mm (4.5mm SPC+1mm IXPE)  
Wear Layer: 0.5mm**

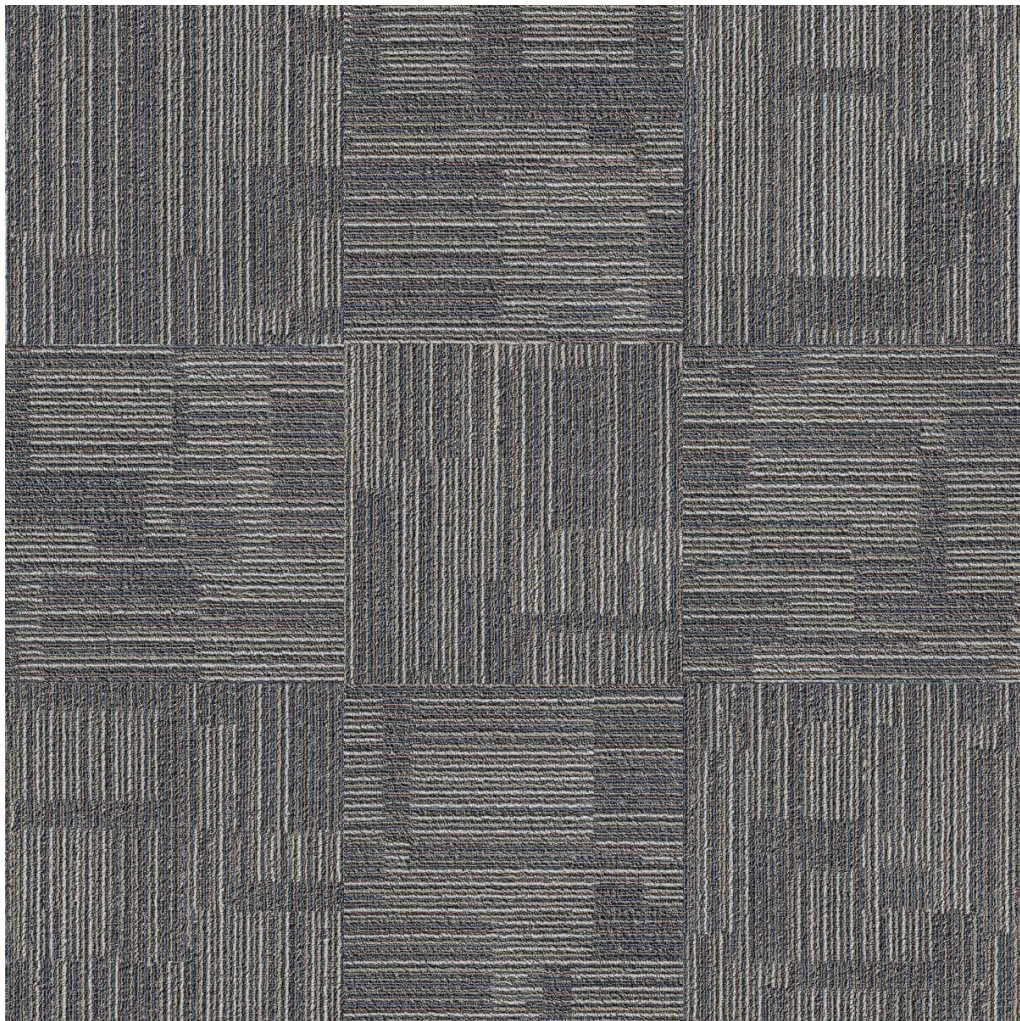
**Package: 8 Pcs/Carton, 1.4884 M2/Carton**

**PART.2 SPC Floor Collections**  
**-Carpet Pattern**





## PART.2 Colors-Carpet Pattern



Sku: MST-22023

Specification: 610\*305\*5.5mm (4.5mm SPC+1mm IXPE)  
Wear Layer: 0.5mm

Package: 8 Pcs/Carton, 1.4884 M2/Carton

## PART.2 Colors-Carpet Pattern



Skü: MST-22026

Specification: 610\*305\*5.5mm (4.5mm SPC+1mm IXPE)  
Wear Layer: 0.5mm

Package: 8 Pcs/Carton, 1.4884 M2/Carton



**Mi Summer**

FLOOR FOR YOU

301, Building 8, Junmao Technology Innovation Park,  
No. 66 Chunchang Road, Shanghai, China

Tel: +86-13816239147

Email: [sales@misummerfloor.com](mailto:sales@misummerfloor.com)

Web: <https://misummerfloor.com>

Contact: Terry Tang (as sales manager)

